

**acr** *COOL*  
**T** *Series*

*Everything Cool*  
***to everywhere***



[www.acrcool.com](http://www.acrcool.com)  
[info@acrcool.com](mailto:info@acrcool.com)

*We keep it cool*  
***in extreme conditions***



*Satisfied people is our best business*

- ACR Group was founded in 1995, as a result of the experience of its founder in the field of transport and air conditioning with more than 25 years of experience. The company is born to focus on the air conditioning and mainly on the automotive industry.
- We manufacture cold equipment for vehicles, air conditioning compressors of all kinds, machinery for air conditioning specific for workshop, settling internationally.
- Our base of operations has an area of 4,500 m<sup>2</sup>, where manufacturing is located of cold equipment, compressors, machinery manufacturing, logistics warehouse and offices. Our headquarters is located in the city of Alzira, Valencia (Spain).
- We also have a Technical Assistance service, as well as a Repair Service and maintenance of any type of equipment, regardless of whether we have manufactured it.
- We have an extensive commercial network, with numerous international distributors, as well as with commercial agents that support the work in each region.
- Our strong point is customer service. This is achieved thanks to the combination of our experience in the market, our technical knowledge of the sector and our experience as a manufacturer.
- We provide the best customer support by helping you choose the equipment you need, personalizing if necessary, giving telephone assistance, training our customers, etc ...

[www.acrcool.com](http://www.acrcool.com)





*We design and manufacture cold equipment designed for the most demanding conditions.*

At ACR Group we know how difficult it is to maintain a temperature constant during the distribution of refrigerated goods in the city, with the constant stops and doors opening in the delivery.

Our goal is to maintain the chain of cold, which is the most important for certain goods to arrive in perfect conditions to the consumer.



***The ACR COOL T Series range offers extreme flexibility to ensure you have the right unit for your challenging operations.***

The T Series range is specially designed for the transport of short and medium distance goods where conditions are more difficult and you have to ensure a response of maximum reliability.

T Series equipment can be installed in any vehicle intended for the transport of merchandise.



**acr** *COOL*  
T Series

## Index of equipments

- 5    **ACR COOL TE15** *ELECTRIC-BATTERY DRIVEN R134A*
- 6    **ACR COOL T15** *DIRECT ENGINE DRIVEN R134A*
- 7    **ACR COOL T15** *DIRECT ENGINE DRIVEN R404A / R452A*
- 8    **ACR COOL T20** *DIRECT ENGINE DRIVEN R134A*
- 9    **ACR COOL T20** *DIRECT ENGINE DRIVEN R404A / R452A*
- 10    **ACR COOL T30** *DIRECT ENGINE DRIVEN R134A*
- 11    **ACR COOL T30** *DIRECT ENGINE DRIVEN R404A / R452A*
- 12    **ACR COOL T50** *DIRECT ENGINE DRIVEN R134A*
- 13    **ACR COOL T50** *DIRECT ENGINE DRIVEN R404A / R452A*
- 14    **ACR COOL T20 Stand-by** *R404A / R452A*
- 15    **ACR COOL T30 Stand-by** *R404A / R452A*
- 16    **ACR COOL T50 Stand-by** *R404A / R452A*
- 17    **ACR COOL TD6** *DIESEL ENGINE TYPE R404A / R452A*





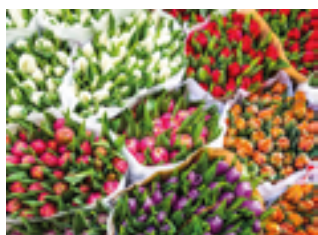
# ACR COOL TE15 ELECTRIC-BATTERY DRIVEN R134A



Model	ACR Cool TE15		
Structure	Roof / Front Mounted		
Refrigerant	R134A		
Absorption (road) AMP	12V	14 A	
	24V	7 A	
Compressor on road	Electric type		
Condenser	Dimension	800x520x160 mm	
Evaporator	Dimension	700x600x180 mm	
	Air Flow	750 m³/h	
Cooling Capacity	T <sup>a</sup>	On road	Stand-By
	0°C	1450W	1450W

## Stand-By option 220 V or 380 V

System includes an additional fully working circuit to work with 220v or 380v plug. When the vehicle is stop, the ELECTRIC STAND BY SYSTEM permits to keep the cold. This additional circuit includes a second compressor, electric motor, electrovalves, specific pipes, electric and electronic control, etc... This is built inside the unit.



- Equipment designed for low capacity vehicles.
- Perfect for short and medium distances.
- Suitable for tropical climate, up to 55 °C.



# ACR COOL T15

*DIRECT ENGINE DRIVEN*  
**R134A**



Model	ACR Cool T15		
Structure	Roof / Front Mounted		
Refrigerant	R134A		
Absorption (road) AMP	12V	14 A	
	24V	7 A	
Compressor on road	138 cc / 5H14		
Condenser	Dimension	800x520x160 mm	
Evaporator	Dimension	700x600x180 mm	
Cooling Capacity	Air Flow	750 m³/h	
	T <sup>a</sup>	On road	Stand-By
	0°C	1950W	1078W

## Stand-By option 220 V or 380 V

System includes an additional fully working circuit to work with 220v or 380v plug. When the vehicle is stop, the ELECTRIC STAND BY SYSTEM permits to keep the cold. This additional circuit includes a second compressor, electric motor, electrovalves, specific pipes, electric and electronic control, etc... This is built inside the unit.



- Equipment designed for low capacity vehicles.
- Perfect for short and medium distances.
- Suitable for tropical climate, up to 55 °C.



# ACR COOL T15

*DIRECT ENGINE DRIVEN*  
**R404A / R452A**



Model	ACR Cool T15		
Structure	Roof / Front Mounted		
Refrigerant	R404A / R452A		
Absorption (road) AMP	12V	14 A	
	24V	7 A	
Compressor on road	138 cc / 5H14		
Condenser	Dimension	800x520x160 mm	
Evaporator	Dimension	700x600x180 mm	
	Air Flow	750 m³/h	
Cooling Capacity	T <sup>a</sup>	On road	Stand-By
	0°C	2438W	1345W
	-20°C	1268W	710W

## Stand-By option 220 V or 380 V

System includes an additional fully working circuit to work with 220v or 380v plug. When the vehicle is stop, the ELECTRIC STAND BY SYSTEM permits to keep the cold. This additional circuit includes a second compressor, electric motor, electrovalves, specific pipes, electric and electronic control, etc... This is built inside the unit.



- Equipment designed for low capacity vehicles.
- Perfect for short and medium distances.
- Suitable for tropical climate, up to 55 °C.



**acr** *COOL*  
Series

# ACR COOL T20

*DIRECT ENGINE DRIVEN*  
**R134A**



Model	ACR Cool T20		
Structure	Roof / Front Mounted		
Refrigerant	R134A		
Absorption (road) AMP	12V	21 A	
	24V	10.5 A	
Compressor on road	157cc / 7H15		
Condenser	Dimension	800x520x160 mm	
Evaporator	Dimension	870x600x180 mm	
	Air Flow	750 m³/h	
Cooling Capacity	T <sup>a</sup>	On road	Stand-By
	0°C	2650W	1840W

## Stand-By option 220 V or 380 V

System includes an additional fully working circuit to work with 220v or 380v plug. When the vehicle is stop, the ELECTRIC STAND BY SYSTEM permits to keep the cold. This additional circuit includes a second compressor, electric motor, electrovalves, specific pipes, electric and electronic control, etc... This is built inside the unit.

- Equipment designed for medium-low capacity vehicles.
- Perfect for short and medium distances.
- Suitable for tropical climate, up to 55 °C.





# ACR COOL T20

*DIRECT ENGINE DRIVEN*  
**R404A / R452A**



Model	ACR Cool T20		
Structure	Roof / Front Mounted		
Refrigerant	R404A / R542A		
Absorption (road) AMP	12V	21 A	
	24V	10.5 A	
Compressor on road	157cc / 7H15		
Condenser	Dimension	800x520x160 mm	
Evaporator	Dimension	870x600x180 mm	
	Air Flow	750 m³/h	
Cooling Capacity	T <sup>a</sup>	On road	Stand-By
	0°C	3312W	1840W
	-20°C	1656W	1010W

## Stand-By option 220 V or 380 V

System includes an additional fully working circuit to work with 220v or 380v plug. When the vehicle is stop, the ELECTRIC STAND BY SYSTEM permits to keep the cold. This additional circuit includes a second compressor, electric motor, electrovalves, specific pipes, electric and electronic control, etc... This is built inside the unit.

- Equipment designed for medium-low capacity vehicles.
- Perfect for short and medium distances.
- Suitable for tropical climate, up to 55 °C.



**acr** *COOL*  
T Series

# ACR COOL T30

*DIRECT ENGINE DRIVEN*  
**R134A**



Model	ACR Cool T30		
Structure	Roof / Front Mounted		
Refrigerant	R134A		
Absorption (road) AMP	12V	28 A	
	24V	14 A	
Compressor on road	157cc / 7H15		
Condenser	Dimension	900x520x160mm	
Evaporator	Dimension	1080x600x180mm	
	Air Flow	1500 m³/h	
Cooling Capacity	T <sup>a</sup>	On road	Stand-By
	0°C	3150W	1735W

## Stand-By option 220 V or 380 V

System includes an additional fully working circuit to work with 220v or 380v plug. When the vehicle is stop, the ELECTRIC STAND BY SYSTEM permits to keep the cold. This additional circuit includes a second compressor, electric motor, electrovalves, specific pipes, electric and electronic control, etc... This is built inside the unit.

- Equipment designed for medium-high capacity vehicles.
- Perfect for medium distances.
- Suitable for tropical climate, up to 55 °C.



# ACR COOL T30

*DIRECT ENGINE DRIVEN*  
**R404A / R452A**



Model	ACR Cool T30		
Structure	Roof / Front Mounted		
Refrigerant	R404A / R542A		
Absorption (road) AMP	12V	28 A	
	24V	14 A	
Compressor on road	157cc / 7H15		
Condenser	Dimension	900x520x160mm	
Evaporator	Dimension	1080x600x180mm	
	Air Flow	1500 m³/h	
Cooling Capacity	T <sup>a</sup>	On road	Stand-By
	0°C	3938W	2162W
	-20°C	2047W	1200W

## Stand-By option 220 V or 380 V

System includes an additional fully working circuit to work with 220v or 380v plug. When the vehicle is stop, the ELECTRIC STAND BY SYSTEM permits to keep the cold. This additional circuit includes a second compressor, electric motor, electrovalves, specific pipes, electric and electronic control, etc... This is built inside the unit.

- Equipment designed for medium-high capacity vehicles.
- Perfect for medium distances.
- Suitable for tropical climate, up to 55 °C.



# ACR COOL T50

*DIRECT ENGINE DRIVEN*  
**R134A**



Model	ACR Cool T50		
Structure	Roof / Front Mounted		
Refrigerant	R134A		
Absorption (road) AMP	12V	28 A	
	24V	14 A	
Compressor on road	157cc / 7H15		
Condenser	Dimension	1130x520x160mm	
Evaporator	Dimension	1290x700x180mm	
	Air Flow	2250 m³/h	
Cooling Capacity	T <sup>a</sup>	On road	Stand-By
	0°C	4050W	2214W

## Stand-By option 220 V or 380 V

System includes an additional fully working circuit to work with 220v or 380v plug. When the vehicle is stop, the ELECTRIC STAND BY SYSTEM permits to keep the cold. This additional circuit includes a second compressor, electric motor, electrovalves, specific pipes, electric and electronic control, etc... This is built inside the unit.

- Equipment designed for medium-high capacity vehicles.
- Perfect for medium distances.
- Suitable for tropical climate, up to 55 °C.





# ACR COOL T50

*DIRECT ENGINE DRIVEN*  
**R404A / R452A**



Model	ACR Cool T50		
Structure	Roof / Front Mounted		
Refrigerant	R404A / R452A		
Absorption (road) AMP	12V	28 A	
	24V	14 A	
Compressor on road	157cc / 7H15		
Condenser	Dimension	1130x520x160mm	
Evaporator	Dimension	1290x700x180mm	
	Air Flow	2250 m <sup>3</sup> /h	
Cooling Capacity	T <sup>a</sup>	On road	Stand-By
	0°C	5060W	2790W
	-20°C	2630W	1462W

## Stand-By option 220 V or 380 V

System includes an additional fully working circuit to work with 220v or 380v plug. When the vehicle is stop, the ELECTRIC STAND BY SYSTEM permits to keep the cold. This additional circuit includes a second compressor, electric motor, electrovalves, specific pipes, electric and electronic control, etc... This is built inside the unit.

- Equipment designed for medium-high capacity vehicles.
- Perfect for medium distances.
- Suitable for tropical climate, up to 55 °C.



# ACR COOL T20 *Stand-By*

**ROOF TYPE**

*DIRECT ENGINE DRIVEN  
WITH STAND-BY  
R404A / R452A*



Model	ACR Cool T20 Stand-By		
Structure	Front Mounted		
Refrigerant	R404A / R452A		
Absorption (road) AMP	12V	21 A	
	24V	10.5 A	
Electric system option	220 V or 380 V		
Compressor on road	157cc / 7H15		
Condenser	Dimension & Weight	930x860x230mm 50 kg	
Evaporator	Dimension	870x600x180mm	
	Air Flow	750 m³/h	
Cooling Capacity	T <sup>a</sup>	On road	Stand-By
	0°C	3312W	1840W
	-20°C	1656W	1010W

## Stand-By option 220 V or 380 V

System includes an additional fully working circuit to work with 220v or 380v plug. When the vehicle is stop, the ELECTRIC STAND BY SYSTEM permits to keep the cold. This additional circuit includes a second compressor, electric motor, electrovalves, specific pipes, electric and electronic control, etc... This is built inside the unit.

- Equipment designed for medium-low capacity vehicles.
- Perfect for short and medium distances.
- Suitable for tropical climate, up to 55 °C.



# ACR COOL T30 *Stand-By*

**WALL TYPE**

*DIRECT ENGINE DRIVEN  
WITH STAND-BY  
R404A / R452A*



Model	ACR Cool T30 Stand-By		
Structure	Front Mounted		
Refrigerant	R404A / R452A		
Absorption (road) AMP	12V	28 A	
	24V	14 A	
Electric system option	220 V or 380 V		
Compressor on road	157cc / 7H15		
Condenser	Dimension & Weight	1300x480x490mm 90 kg	
Evaporator	Dimension	1080x600x180mm	
	Air Flow	1500 m³/h	
Cooling Capacity	T <sup>a</sup>	On road	Stand-By
	0°C	3938W	2162W
	-20°C	2047W	1200W

## Stand-By option 220 V or 380 V

System includes an additional fully working circuit to work with 220v or 380v plug. When the vehicle is stop, the ELECTRIC STAND BY SYSTEM permits to keep the cold. This additional circuit includes a second compressor, electric motor, electrovalves, specific pipes, electric and electronic control, etc... This is built inside the unit.

- Equipment designed for medium-high capacity vehicles.
- Perfect for medium distances.
- Suitable for tropical climate, up to 55 °C.



# ACR COOL T50 *Stand-By*

**WALL TYPE**

*DIRECT ENGINE DRIVEN  
WITH STAND-BY  
R404A / R452A*



Model	ACR Cool T50 Stand-By		
Structure	Front Mounted		
Refrigerant	R404A / R452A		
Absorption (road) AMP	12V	36 A	
	24V	18 A	
Electric system option	220 V or 380 V		
Compressor on road	157cc / 7H15		
Condenser	Dimension & Weight	1300x480x490mm 90 kg	
Evaporator	Dimension	1290x700x180mm	
	Air Flow	2250 m³/h	
Cooling Capacity	T <sup>a</sup>	On road	Stand-By
	0°C	5060W	2790W
	-20°C	2630W	1462W

## Stand-By option 220 V or 380 V

System includes an additional fully working circuit to work with 220v or 380v plug. When the vehicle is stop, the ELECTRIC STAND BY SYSTEM permits to keep the cold. This additional circuit includes a second compressor, electric motor, electrovalves, specific pipes, electric and electronic control, etc... This is built inside the unit.

- Equipment designed for medium-high capacity vehicles.
- Perfect for medium distances.
- Suitable for tropical climate, up to 55 °C.



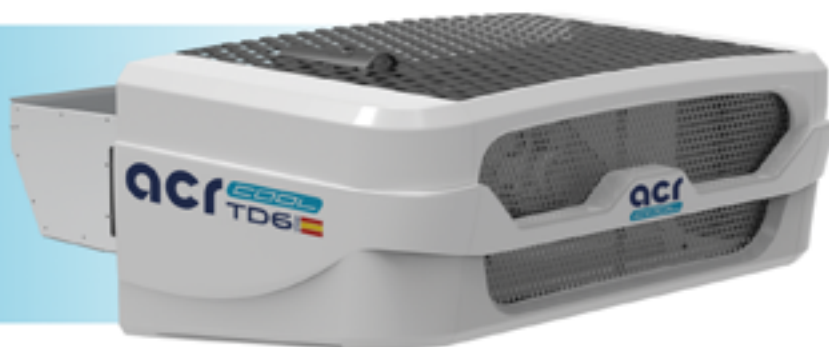


# ACR COOL TD6

DIESEL ENGINE TYPE

## TD6

DIESEL TRANSPORT  
REFRIGERATION UNIT



UNIT DIMENSIONS: Width 1858 mm x Depth 978 mm x Height 719 mm

### PERFORMANCE

#### REFRIGERATION CAPACITY AT AN AMBIENT TEMPERATURE OF 30°C

Capacity during engine operation at 0°C	6990 W
Capacity during motor operation at -20°C	4500 W
Capacity during electrical operation at 0°C	4990 W
Capacity during electrical operation at -20°C	3500 W

#### AIR FLOW RATE DURING MOTOR OPERATION AT HIGH SPEED

Volume of air flow at 0 Pa static pressure	8160 m³/h
--	-----------

HIGH AMBIENT DESIGNED. DESIGNED TO WORK IN EXTREME CONDITIONS

### TECHNICAL SPECIFICATIONS

#### COMPRESSOR

Model	BOCK FKX30/325K
Displacement	325 cm³

#### COMPARTMENT LENGTH, REFRIGERANT, ETC.

Compartment length	6 - 6.5 m
Refrigerant	R 404 and R 452 A
Air flow rate	8160 m³/h
Controller	ACR Smart Control

#### ENGINE

Model	ACR 370
Power rating	11.2 kW
Maintenance interval	2000 horas
No. of cylinders/displacement	3 / 855 cm³

#### REFRIGERANT CHARGE

Charge	3.4 kg
--------	--------

#### WEIGHT (Including battery)

Model TD6	425 kg
-----------	--------

#### ELECTRIC MOTOR

Voltage/phase/frequency	400/3/50 - 200/3/60
Rated power	5.5 kW

- Equipment designed for medium-high capacity vehicles.
- Perfect for medium and long distances.
- Suitable for tropical climate, up to 55 °C.



# UNITS CONTROLLER

This controller has the pressure, voltage, temperature sensor fault detection and other functions.



- Very compact and easy to install
- Easy to connect
- Digital display
- High pressure switch
- Temperature sensor inside the box
- Defrosting temperature sensor
- Relay board control for sensors and fans
- Could work in 12v or 24v (should be informed before)

## *All refrigeration Units include:*



- Compressor (different type: 12v - 24v, R404, R134, 8PK, 2A)
- Different pipes Electric cables with connectors
- Temperature sensor
- Fittings LP and HP
- Various components



**EASY  
Installation**

# MAINTENANCE

ACR COOL refrigeration units are designed to simplify maintenance for the operator as much as possible.

Our expertise of more than 25 years in the field of the spare part allows us to make available all the spare parts of better quality.

Our team accompanies you in terms of training and allows you to ensure the maintenance of all our products.



EVERYDAY ON ROAD



# DIRECT ENGINE DRIVEN RANGE

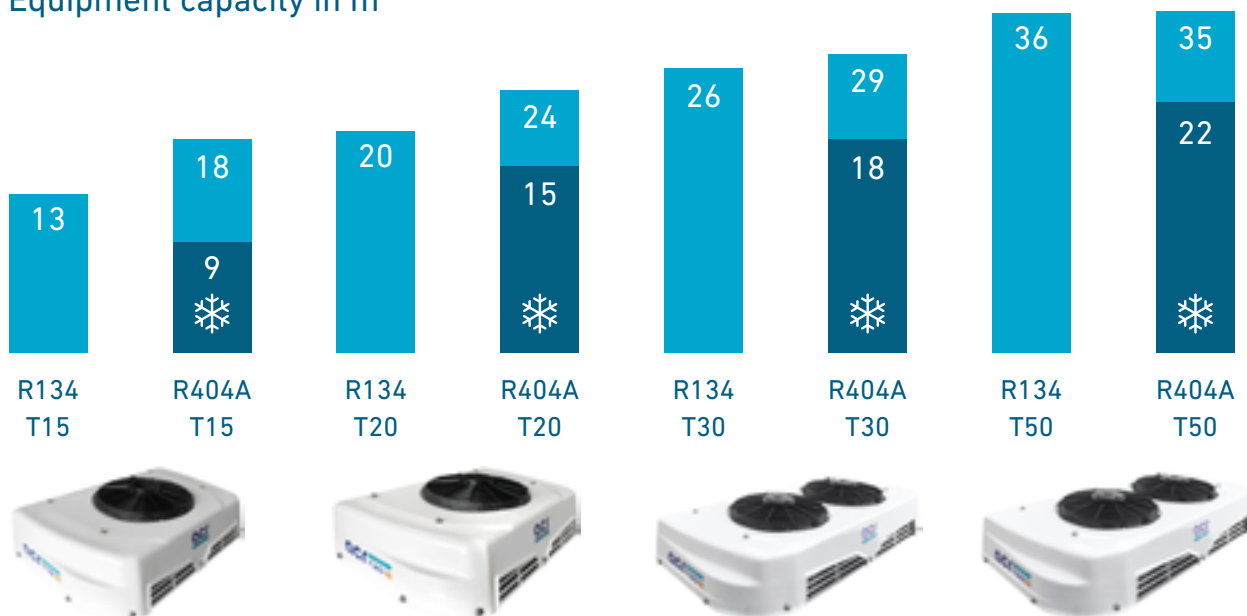
- This information is a guide to select the right unit to match your application.
- These figures are maximum vehicle volumes, calculated on road operation, at 2400 rpm compressor speed and 30°C ambient temperature.
- Recommendations are based in a precooled loads and K value of 0,35W/m2K is used for frozen goods (-20°C) and 0,5W/m2K for fresh goods (0°C) for distribution cycle of 8 hours.
- Recommendations are not a guarantee of performance as there are many variables to be considered additionally in any single case.

-20 °C

0 °C

30°C Ambient

Equipment capacity in m<sup>3</sup>





# Made in Spain - Europe



[info@acrcool.com](mailto:info@acrcool.com)



Scan to see our catalogue  
[www.acrcool.com](http://www.acrcool.com)

**acr** **COOL**  
Everything Cool  
to everywhere

## NOTES

This image shows a single page of white paper with horizontal blue lines. The lines are evenly spaced and run across the width of the page. There is no text or other markings on the paper.

# *OUR TEAM YOUR WARRANTY*



*Refrigeration experts working for you*



## HEAD OFFICE

ACR Accesorios y Componentes para Automoción y Refrigeración S.L.  
Pol. Ind. Nº1, C/. Soguers, 11 - 46600 Alzira (Valencia) SPAIN  
Tel.: (+34) 962 400 770

## CONTACT US

[info@acrcool.com](mailto:info@acrcool.com)



*Visit us at [acrcool.com](http://acrcool.com)*

